

## How's and why's (or why not's) of Dormant Seedings

Matt Sousek & Luqi Li  
<http://turf.unl.edu>



### Dormant Seeding

#### • Why not

- Erodible site
- Ground is frozen, snow
- Chance for hard spring frost
- Wait until late summer or fall

### Dormant Seeding

#### • Why

- Another option
- Thanksgiving – Easter
- No delay during spring due to weather
- Starter fertilizer and herbicides in spring
- No irrigation

### Fundamentals for ALL SEEDINGS

- Right grass, Right place, Right time
- Soil Prep
- Irrigation
- **Weed control**
- Mowing-early and often
- Post seeding fertilization

The earlier it covers the easier it gets

### Methods of seeding



### Power-Rake/Vertical Mower

- Set to disrupt top ¼ inch of soil
  - Helps remove small thatch layers
- Promotes good seed to soil contact
  - Can use before or after seeding or both



## Slit seeding

- Minimal soil disruption
  - Seed placed directly in slits
    - Best to seed in two directions or more
- Promotes good seed to soil contact
- Less prone to erosion



## Aerification

- **Solid tines or Hollow tines?**
  - Both will work
    - Hollow tines promote more soil contact
- **More holes the better the seed will take**
  - Target a 2 by 2 inch spacing
  - Requires multiple passes with most commercial aerifiers



## Conventional tillage

- Best suited on level ground
- Great seed bed
- Labor intensive
- Required when grading needed



## Recommended Rates

- Dormant vs. spring seeding: **10 -25% higher rate(??)**

<b>Kentucky bluegrass</b>	2.0 - 3.0 lbs/M
<b>Tall fescue</b>	6.0 - 9.0 lbs/M
<b>Buffalograss</b>	2.0 - 3.0 lbs/M

## What we did

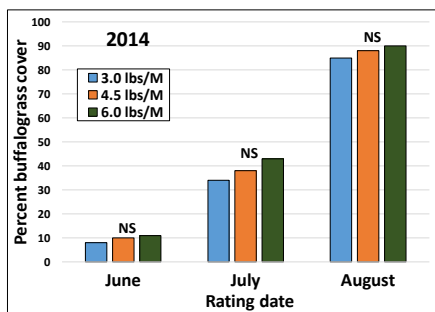
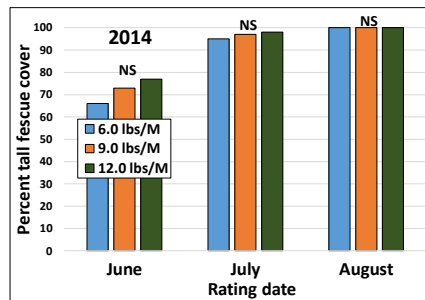
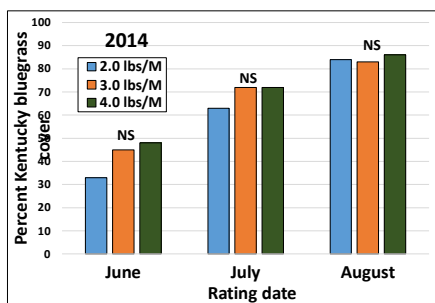
- Three seeding rates:
  - Kentucky bluegrass at 2, 3 or 4 lbs/M
  - Turf-type tall fescue at 6, 9 or 12 lbs/M
  - 'Sundancer' buffalograss at 3, 4.5 or 6 lbs/M
- Two seeding dates:
  - November 20 (Dormant seeding) vs. May 1 (Spring seeding)

## What we did

- Seeds spread by hand, raked with leaf rake
- Tenacity: May 1 and 4 June at 5 oz/A
- Quicksilver: 20 June at 2.0 oz/A
- Irrigation and fertilizer applied after May 1
- Area mowed at 2.5 inch weekly

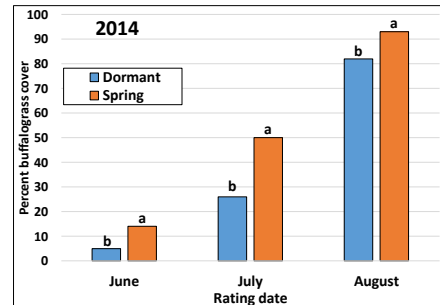
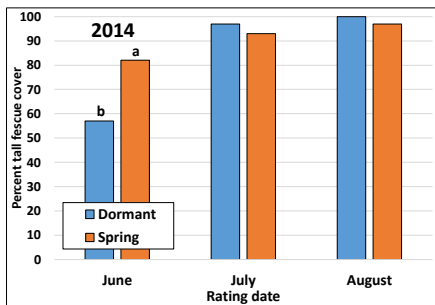
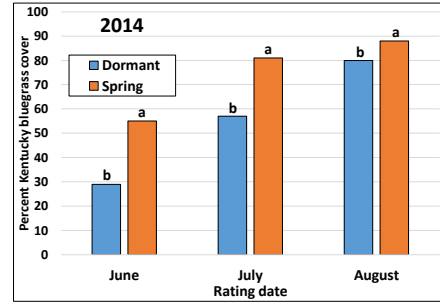
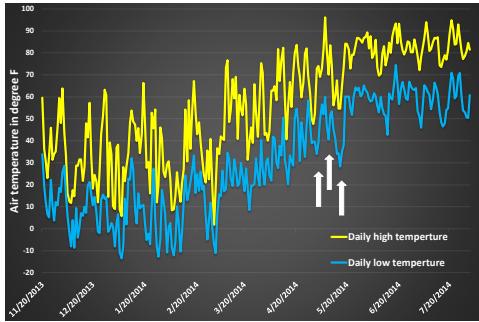
## Take home messages

- Increasing seeding rates may not be necessary for dormant winter seeding of Kentucky bluegrass, tall fescue or buffalograss.



## Take home messages

- Dormant seeding may not perform well compared to spring seeding with late spring frost



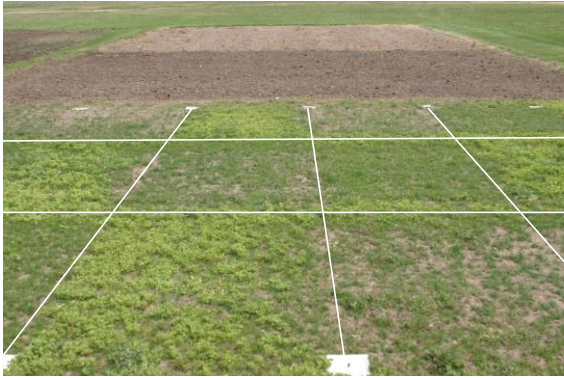
## Don't forget about weed control

- Treat it like a spring seeding
- Sooner the better
- Apply herbicides before germination or after

## Weed Control Options in Seedings

- **Tenacity (Mesotrione)**
  - PRE on bare soil
  - Post over turfed areas
  - Crab + Broadleaves + Nutsedge
- **Drive XLR8 (Quinclorac)**
  - Anytime on TF
  - 7 days prior and Post 28 days after emergence on KBG
  - Crab + broadleaves
- **SquareOne (Quinclorac+Carfentrazone)**
  - Post 7 DAE
  - Crab+Broadleaves
- **Tupersan (Siduron)**
  - Crab
  - PRE
- **Quicksilver (Carfentrazone)**
  - Post
  - Broadleaves

Dormant Seeding KBG May 20



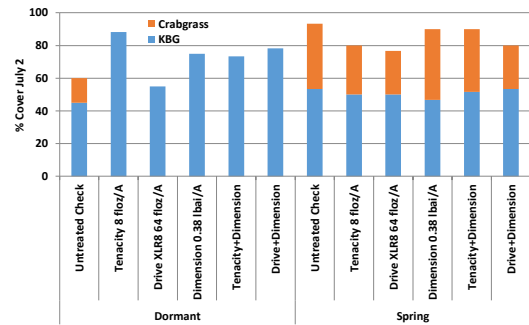
Dormant seeded TF May 20



Spring Seeded TF May 20

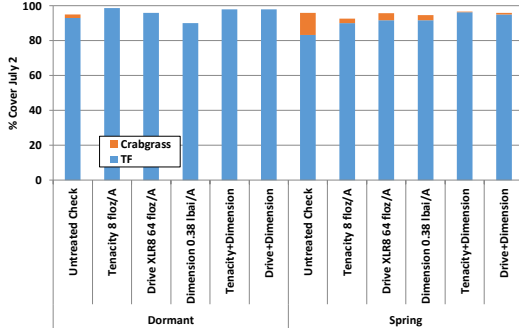


Kentucky bluegrass or large crabgrass cover from dormant or spring-seedings (UNL 2012)



LSD p=0.05 KBG 18.8 Crab 6.9

Tall fescue or large crabgrass cover from dormant or spring-seedings (UNL 2012)



LSD p=0.05 TF 4.3 Crab 3.0

If you decide to dormant seed

- Not necessary to raise rates
- Choose the best seeding method
- Think about spring weed control
- TF is preferred over KBG

<http://turf.unl.edu/>



Turfgrass Science  
University of Nebraska