

## A stroll through the neighborhood

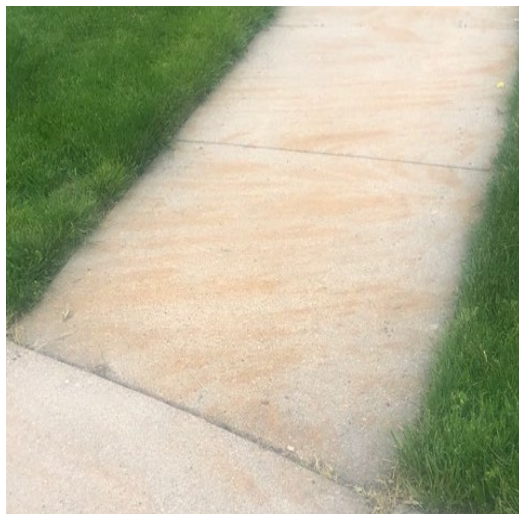
May 28, 2020

Staying at home and walking through the neighborhood for my mental sanity has resulted in seeing first hand several homeowner “oops in lawn care”. While I often snicker when I see them, they can have negative outcomes. Staining from fertilizers on pavement, especially those containing iron (Figure 1) is difficult, if not impossible to remove. When applying dry or granular products to your lawn or landscape it is difficult to keep all of the product on “target”. Lawn Weed and Feed products that end up in the landscape bed may cause injury to your broadleaf ornamentals. Particles that land on concrete should be swept or blown back on to the lawn immediately. Professional applicators are required to do this and homeowners should do it. This is more than a staining issue. When the product “melts” in the rain or irrigation water it can be transported down the driveway (Figure 2) and into the storm drain (Figure 3). Contrary to popular belief, the storm drains do not exit at the water treatment plant, rather they exit into surface water resulting in a non-point pollution source that is easily avoided. As Figure 3 eloquently states “Only rain in the drain”.

Figure 4 is worth more than a snicker. Certainly not confined to homeowners, fertilizer misapplications are one of the more visible and prolonged misapplication screw-ups. To make matters worse this home is a corner lot on a very busy Lincoln street. Check and recheck your application equipment including accurate calibration. There are a plethora of YouTube videos that do a good job describing the process.

**Roch Gaussoin, Professor and Extension Turfgrass Specialist, [rgaussoin1@unl.edu](mailto:rgaussoin1@unl.edu)**

**Figure 1**



**Figure 2**





Figure 3



Figure 4

---

*Extension is a Division of the Institute of Agriculture and Natural Resources at the University of Nebraska-Lincoln cooperating with the Counties and the United States Department of Agriculture.*

*University of Nebraska-Lincoln Extension education programs abide with the nondiscrimination policies of the University of Nebraska-Lincoln and the United States Department of Agriculture.*